






# Our “Partners” in Simulation

nHance Technologies’ tagline is “Your partners in simulation.” We take the time to understand each customer’s unique simulation needs to provide the absolute best solutions that meet those needs and pride ourselves on maximizing value for our “partners.” Our success is evident in our extensive list of partners throughout the world. The map below shows the locations of some of our partners who use nHance Technologies’ products and services.

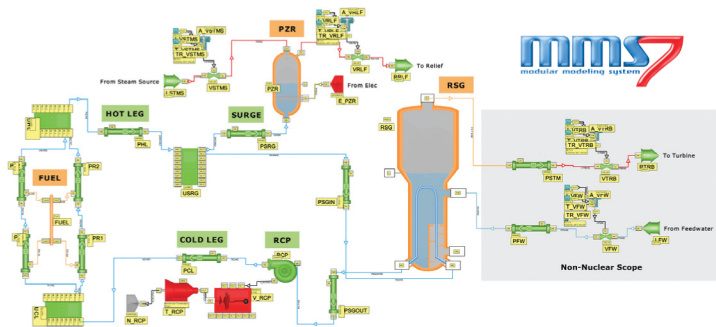
## Our Background

nHance Technologies (nHance) is a pioneer in dynamic simulation and engineering systems analysis. Our Modular Modeling System MMS™, first released in 1984, paved the way for dynamic simulation worldwide and is currently in use by engineering firms and power plant utilities in over 18 countries.

-  Operator Training Simulators
-  Modular Modeling System (MMS™)
-  University — MMS
-  NetSim™
-  nHance Technologies, Inc. Office



# Our Product Lines



## Dynamic Simulation



## Operator Training Simulators



## Mobile Solutions



Your partners in simulation

## Dynamic Simulation

- Modular Modeling System (MMS™)
- Human machine interface (HMI) emulations
- Engineering services

## Operator Training Simulators

- Full-scope turn-key simulators
- PlantSim™ generic simulators
- Customized generic simulators

## Mobile Solutions



**Power Plant Fundamentals** is an interactive ebook series on the basics of power plant operation. **Free samples**



**nH2O** is a free steam property calculator for the iPhone (coming soon to iPad).

**Free app**



**SyncGen** is a realistic simulation of a synchroscope for the iPad.



**nPlantStatus** provides real-time, real-plant status updates on the iPad.



nHancetech.com | info@nHancetech.com